

Peach County, Georgia

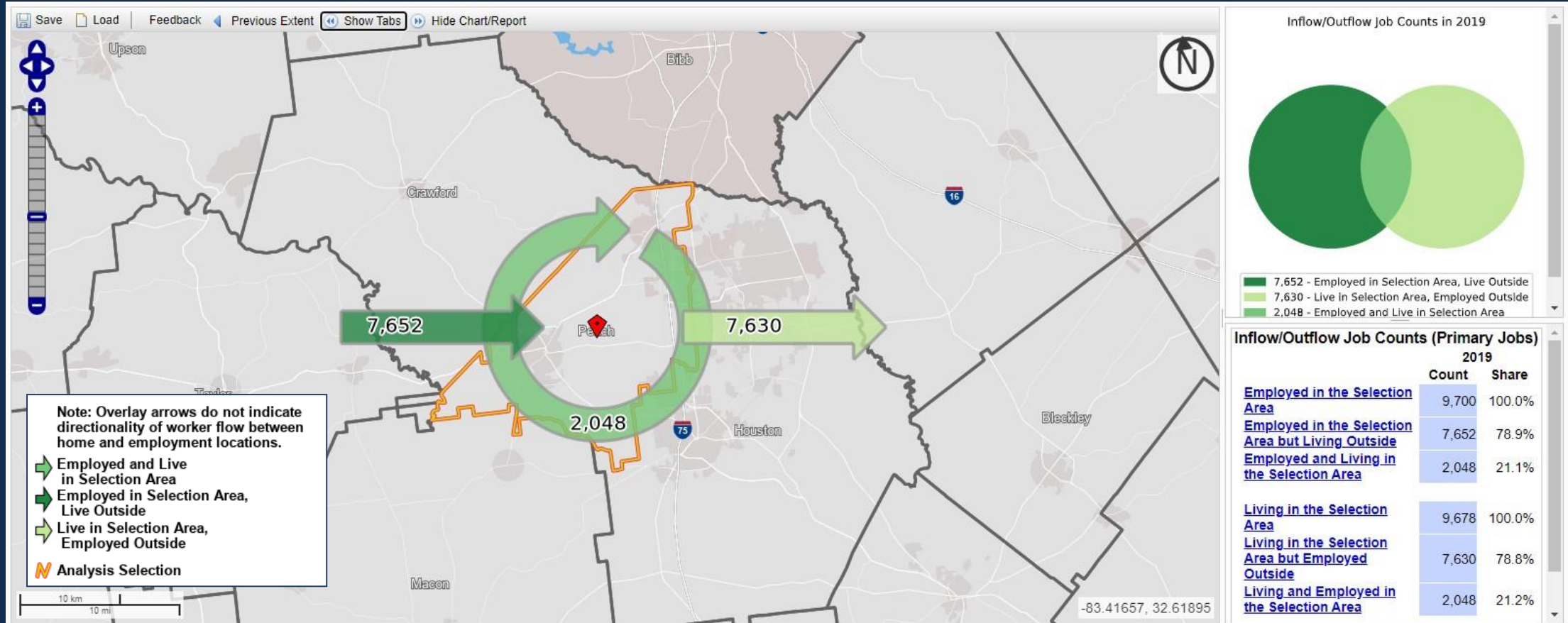
Work Area Commuting Series

United States Census Bureau
Local Employment Dynamics - OnTheMap



Prepared By:
Workforce Statistics and Economic Research
(404) 232-3875
www.dol.state.ga.us

Peach County, Georgia Inflow/Outflow Report



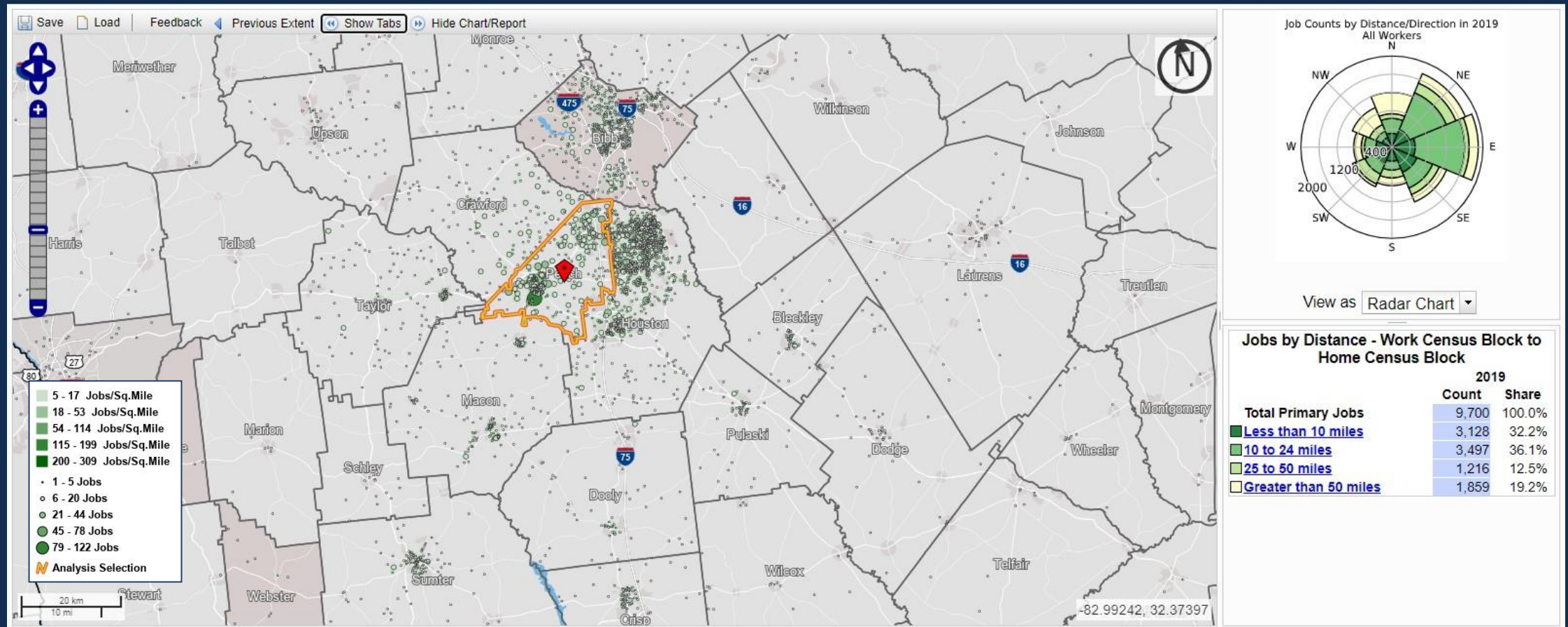
Note: The U.S. Census Bureau reviewed this data product for unauthorized disclosure of confidential information and approved the disclosure avoidance practices applied to this release. CBDRB-FY21-249.

Accessibility | Information Quality | FOIA | Data Protection and Privacy Policy | U.S. Department of Commerce | Census Home
Source: U.S. Census Bureau, Center for Economic Studies, LEHD | e-mail: CES.OnTheMap.Feedback@census.gov

There are 9,700 primary jobs in the area. Approximately 79% (7,652) of these jobs are done by persons living outside of the area. Area residents work the remaining 2,048 primary jobs. Additionally, 7,630 residents leave the area for their primary job.

Peach County, Georgia

Distance Direction Report – Area Workers



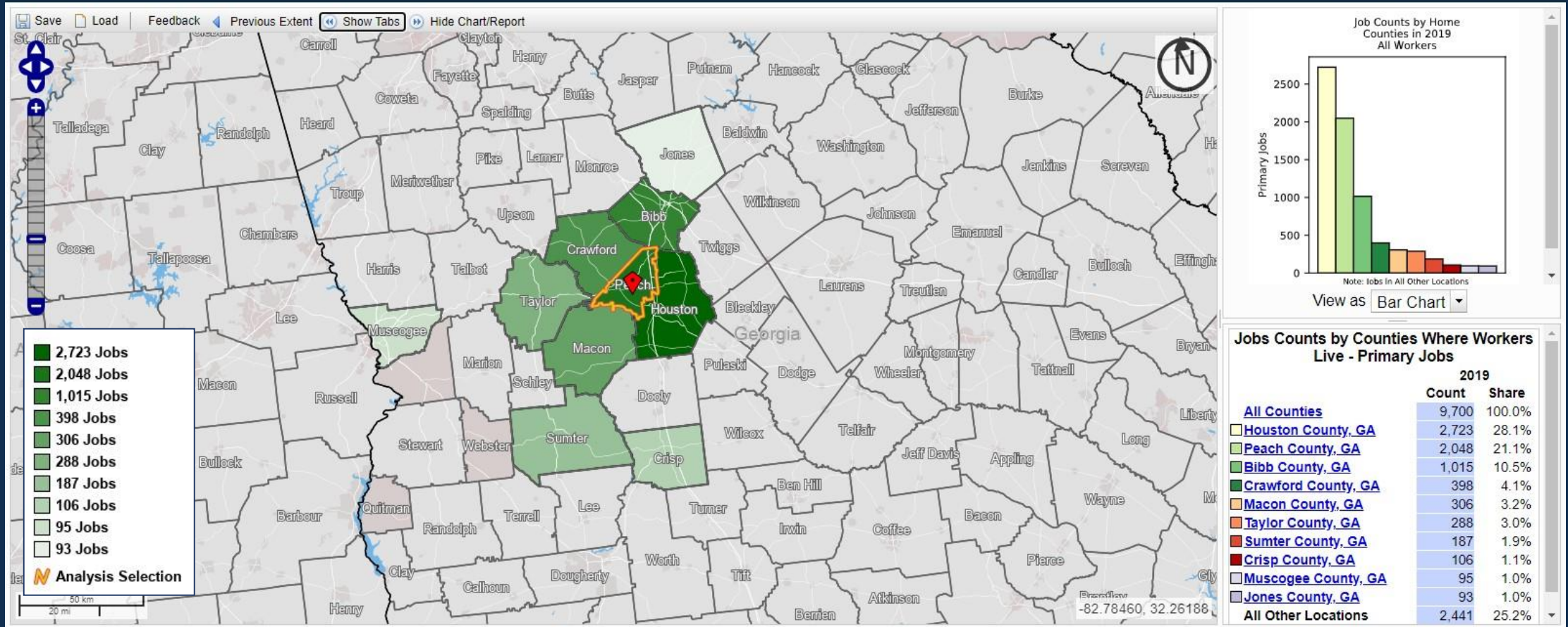
Note: The U.S. Census Bureau reviewed this data product for unauthorized disclosure of confidential information and approved the disclosure avoidance practices applied to this release. CBDRB-FY21-249.

Accessibility | Information Quality | FOIA | Data Protection and Privacy Policy | U.S. Department of Commerce | Census Home
Source: U.S. Census Bureau, Center for Economic Studies, LEHD | e-mail: CES.OnTheMap.Feedback@census.gov

The dots on this map represent where home is for the workers of the 9,700 primary jobs in the area. Approximately 32% of workers drive less than ten miles to get home. Approximately 32% of workers drive 25 miles or more to get home.

Peach County, Georgia

Destination Report – Area Workers



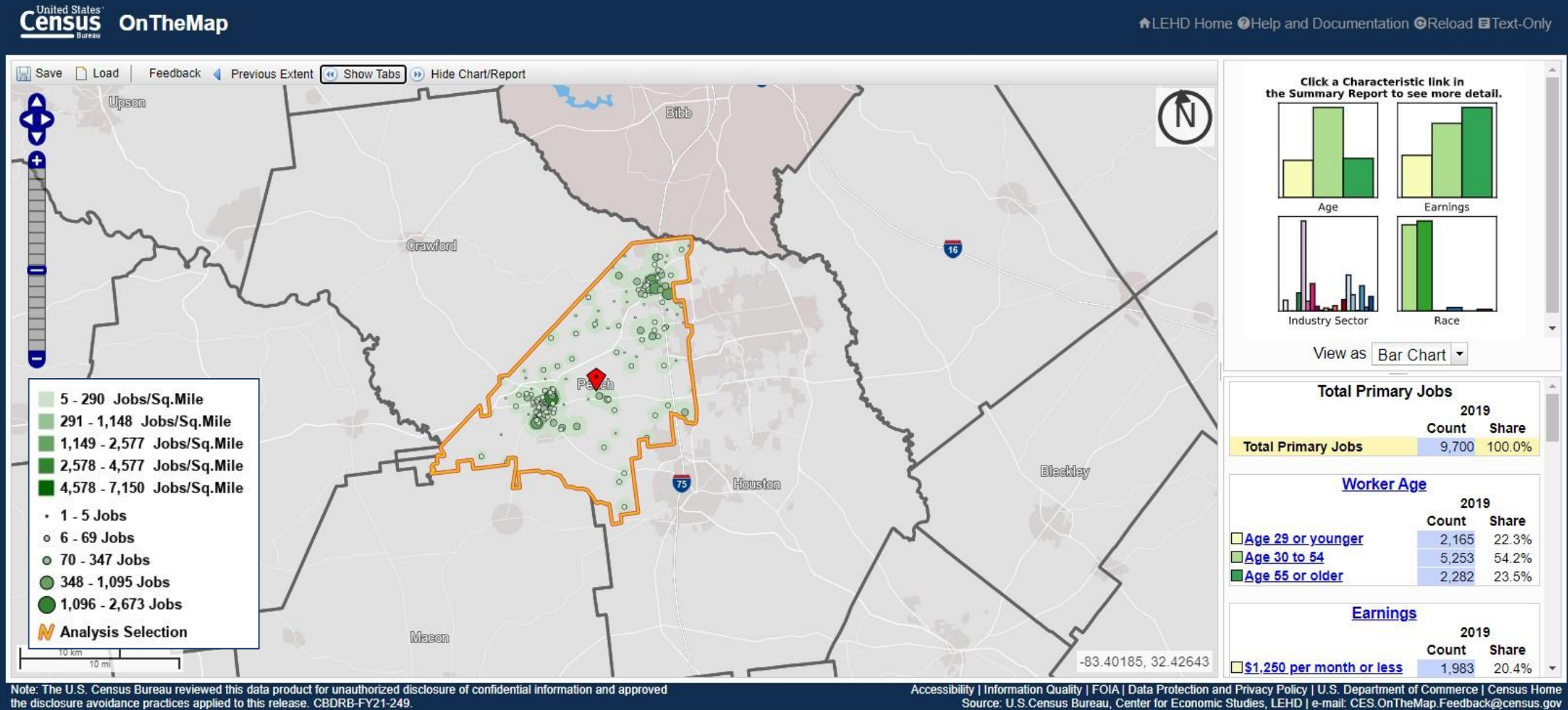
Note: The U.S. Census Bureau reviewed this data product for unauthorized disclosure of confidential information and approved the disclosure avoidance practices applied to this release. CBDRB-FY21-249.

Accessibility | Information Quality | FOIA | Data Protection and Privacy Policy | U.S. Department of Commerce | Census Home
Source: U.S. Census Bureau, Center for Economic Studies, LEHD | e-mail: CES.OnTheMap.Feedback@census.gov

The map shows the top ten home counties for the workers of the 9,700 primary jobs in the area.

Peach County, Georgia

Area Profile Report – Area Workers



This map shows the work locations for the 9,700 primary jobs in the area. Additional worker details are shown on the next slide.

Peach County, Georgia

Area Profile Report Details – Area Workers

	2019	
	Count	Share
Total Primary Jobs	9,700	100.0%

	2019	
	Count	Share
Age 29 or younger	2,165	22.3%
Age 30 to 54	5,253	54.2%
Age 55 or older	2,282	23.5%

	2019	
	Count	Share
\$1,250 per month or less	1,983	20.4%
\$1,251 to \$3,333 per month	3,483	35.9%
More than \$3,333 per month	4,234	43.6%

	2019	
	Count	Share
White Alone	4,593	47.4%
Black or African American Alone	4,798	49.5%
American Indian or Alaska Native Alone	23	0.2%
Asian Alone	185	1.9%
Native Hawaiian or Other Pacific Islander Alone	5	0.1%
Two or More Race Groups	96	1.0%

	2019	
	Count	Share
Not Hispanic or Latino	9,174	94.6%
Hispanic or Latino	526	5.4%

	2019	
	Count	Share
Agriculture, Forestry, Fishing and Hunting	375	3.9%
Mining, Quarrying, and Oil and Gas Extraction	0	0.0%
Utilities	0	0.0%
Construction	630	6.5%
Manufacturing	3,116	32.1%
Wholesale Trade	339	3.5%
Retail Trade	948	9.8%
Transportation and Warehousing	166	1.7%
Information	31	0.3%
Finance and Insurance	104	1.1%
Real Estate and Rental and Leasing	63	0.6%
Professional, Scientific, and Technical Services	188	1.9%
Management of Companies and Enterprises	0	0.0%
Administration & Support, Waste Management and Remediation	394	4.1%
Educational Services	1,246	12.8%
Health Care and Social Assistance	560	5.8%
Arts, Entertainment, and Recreation	24	0.2%
Accommodation and Food Services	875	9.0%
Other Services (excluding Public Administration)	138	1.4%
Public Administration	503	5.2%

	2019	
	Count	Share
Less than high school	1,331	13.7%
High school or equivalent, no college	2,508	25.9%
Some college or Associate degree	2,264	23.3%
Bachelor's degree or advanced degree	1,432	14.8%
Educational attainment not available (workers aged 29 or younger)	2,165	22.3%

	2019	
	Count	Share
Male	5,797	59.8%
Female	3,903	40.2%

These are the available demographic and industry level details for the workers of the jobs in the area from the Work Area Profile Report.